

Locker Hasps



391 350

Chrome plated Zink, satin chrome plated Zink on request.



390 785

Zink plated steel.
With pivoting arm.



390 684

Zink plated steel.

Performance

Assa locker hasps 391 350, 390 785 and 390 684 for material thickness up to 16 mm. Large selection of 3mm thick catches

Function

In locked position the padlock stops the catch from turning. When the padlock is removed the catch can be turned 90° and the locker can be opened. Right hand turning as standard and left hand is available on request. For the best function Assa recommend padlocks with shackle thickness between 5 and 7 mm and minimum shackle opening of 19 mm.

Accessories

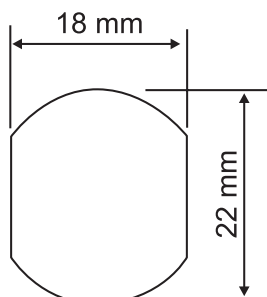
Turn 391 039 can be delivered together with locker hasp with pivoting arm (390 785). The composite turn protects the pivoting arm and creates a more user friendly turn.



turn 391 039

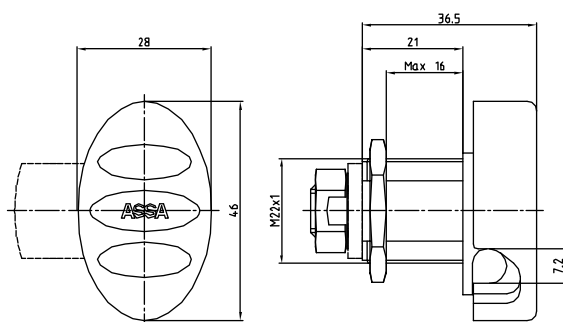
Locker Hasp

Hole preparation



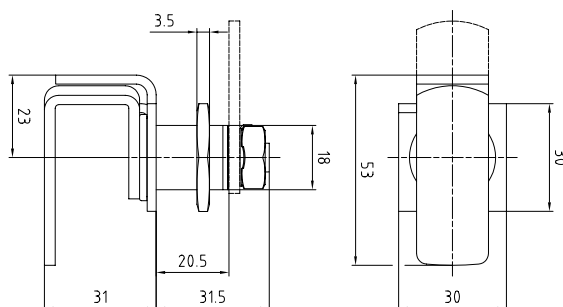
Included in part no: 391350 / 391351 000 011

Part	Part no	Material	Finish
Housing	391292 000 011	Zink	Chrome plated
Core	391349 000 011	Zink	Chrome plated
Large nut	490610 900 057	Steel	Zink plated
Small nut	491439 900 057	Steel	Zink plated
Locking washer	490246 900 057	Steel	Zink plated



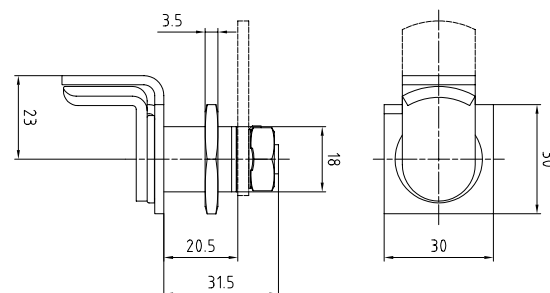
Included in part no: 390785 / 390786 000 057

Part	Part no	Material	Finish
Housing	491480 000 057	Steel	Zink plated
Core	491395 000 057	Steel	Zink plated
Large nut	490610 900 057	Steel	Zink plated
Small nut	491439 900 057	Steel	Zink plated
Locking washer	490246 900 057	Steel	Zink plated



Included in part no: 390684 / 390688 000 057

Part	Part no	Material	Finish
Housing	491480 000 057	Steel	Zink plated
Core	491288 000 057	Steel	Zink plated
Large nut	490610 900 057	Steel	Zink plated
Small nut	491439 900 057	Steel	Zink plated
Locking washer	490246 900 057	Steel	Zink plated



Notes

Catches, see data sheet "Catches"

Spare parts, see data sheet "Spare parts"

ASSA®

An ASSA ABLOY Group company

ASSA ABLOY

Assa Industri AB, Kungsgatan 71, Box 371, 631 05 Eskilstuna, Tel: +46-16 17 70 00, Fax: +46-16 17 70 18
Assa Industri AB, Bergstigen 8, Box 540, 921 28 Lycksele, Tel: +46-950 231 30, Fax: +46-950 231 31