

YNOTLOC™

YR10

ELECTRONIC ROLLER DOOR LOCK

Strong, secure and convenient are vital qualities of any lock. To date, roller door locks have failed to achieve the right balance of these features so compromises had to be made, but no longer. Introducing the YR10, a unique lock that combines the features found in traditional electronic locks, with the physical strength and function required to secure roller doors of any shape and size.

Extreme Security

- Automatic deadbolting.
- 18mm diameter stainless steel bolt pin.
- 20,000N rated force; able to operate after 2,000kg has been applied then removed.
- 30,000N holding force (3,000Kg).
- Keyed access to manual override.

Integrated Access Control

- Anti-tamper and Auto-relock.
- Timed re-lock after 1 minute.
- Multiple attempts to lock and unlock.

Complete Monitoring

- Door position switch.
- Bolt locked and bolt unlocked monitor.

Varied Voltage Input

- Input voltage from 12VDC – 24VDC.

Versatile Installation

- Internal horizontal or vertical installation.

Security System Compatible

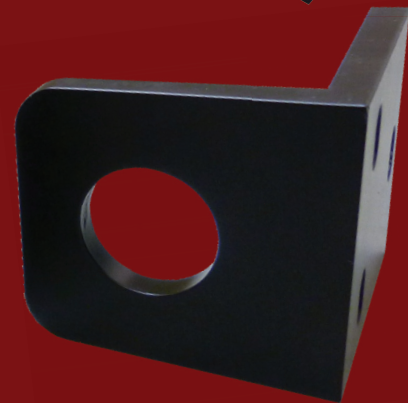
- Integrate with access control and alarm systems.

Dimensions

- 152mmL x 89mmW x 77mmD

Approvals

- Cycle tested to 1000000 operations.



PRODUCT New