



Excel™ E1200

Excel™ Series

Value Engineered Access Hardware

Economically priced alternative to low cost imports. Quality and flexibility for Commercial Applications. The Excel™ product line is designed for system integrators, distributors, installers and building owners presently using low cost import or private label brand access control hardware

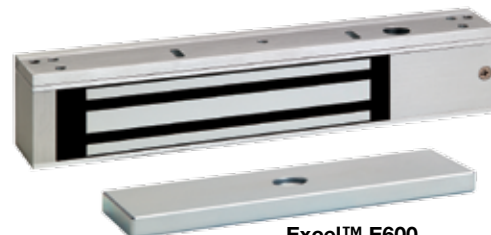
MAGNETIC LOCKS

The Excel™ Architectural Series full featured magnetic locks are easier to install and provide superior, less obtrusive appearance compared to stainless steel epoxy sealed magnetic locks. Full monitoring is standard. The quick mount assembly reduces installation time compared to epoxy sealed magnetic locks.

The value priced Excel™ E6200 Commercial Series full featured magnetic lock is made of an epoxy sealed satin stainless steel housing and utilizes the same mounting template as major competitive brands. Full monitoring is standard. Recommended for interior doors or outdoor gate applications.



Excel™ E6200



Excel™ E600



MODELS



E6200 Security Access Control, & Mantraps, Indoor/Outdoor, 1200 lb / 545 kg holding force



E1200 Security Access Control & Mantraps, 1200 lb / 545 kg holding force



E600 Traffic Control, Air-Locks & Communicating Bathrooms, 600 lb / 272 kg holding force





EXCEL™ E6200 MAGNETIC LOCK

APPLICATION

Security Access Control, & Mantraps, Indoor/Outdoor

1200 lb / 545 kg holding force magnetic lock for exterior, perimeter and interior door security and access control. Magnetic bond sensor and door status outputs are included for remote monitoring, mantraps and system application needs.

STANDARD FEATURES

- Retrofits Securitron M62 and Locknetics 70 locks
- Magnetic Bond Sensor indicates door locked with full holding power
- Door Status indicates door open or closed
- Epoxy sealed electronics, tamper resistant and weatherized for indoor and outdoor use
- Stainless steel machine screws and blind nuts
- 10 ft [3.05m] jacketed, stranded conductor cable
- Dual voltage 12/24VDC
- Architectural stainless steel housing, US32/630

SPECIFICATIONS

Mechanical

Holding Force: 1200 lbs / 545 kg

Housing Stainless steel epoxy filled, all internal components sealed and weatherized

Lock 8" L x 3" H x 1-49/64" D; (203L x 73.5H x 45.7D mm)

Armature 6" L x 13/16" H x 2-11/16" D; (152 L x 20.63 H x 68.26 D mm)

Electrical

Wiring 10 Ft [3.05 m] jacketed, stranded conductor cable for power input and status outputs

Circuitry Voltage and current spike protection and instant release anti-residual magnetism circuitry

Voltage 12/24VDC, field selectable

Current 250mA @ 12VDC; 125mA @ 24VDC

Magnetic Bond Sensor SPDT, 250 mA @ 30VDC

Door Status Contact SPDT, 250 mA @ 30VDC

Weight 12.0 lbs



All trademarks are property of their respective owners.

SECURITY DOOR CONTROLS ■ WWW.SDCSECURITY.COM





EXCEL™ E1200 MAGNETIC LOCK



APPLICATION

Security Access Control & Mantraps

1200 lb / 545 kg holding force magnetic lock for perimeter and interior door security and access control. Door and lock status outputs included for remote monitoring, mantraps and system application needs.



STANDARD FEATURES

- Door status, lock status and Bi-color LED
- Interlocking quick mount assembly
- Adjustable mounting bracket with choice of self drilling and tapping mounting screws or machine screws
- Wire access chamber with terminal block
- Dual voltage 12/24VDC
- 628 Clear anodized aluminum



SPECIFICATIONS

Mechanical

Holding Force: 1200 lbs / 545 kg

Lock 10-1/2" L x 2-7/8" H x 1-5/8" D;
(266 L x 73 H x 41 D mm)

Armature 7-5/16" L x 2-3/8" H x 5/8" D;
(186 L x 61 H x 16 D mm)

Electrical

Circuitry & Wiring: PC board with voltage and current spike protection, instant release anti-residual magnetism circuit, terminal block for power input and status outputs

Circuitry Voltage and current spike protection and instant release anti-residual magnetism circuitry

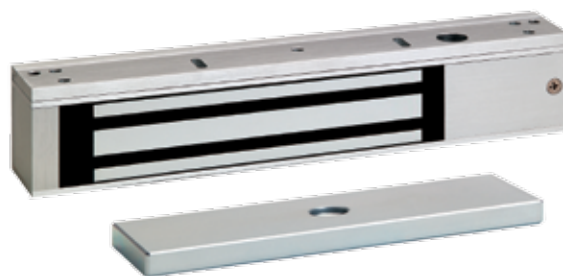
Voltage 12/24VDC, field selectable

Current 500 mA @ 12VDC; 250 mA @ 24VDC

Lock Status Contact SPDT, 2 Amp @ 30VDC

Door Status Contact SPDT, 250 mA @ 30VDC

Weight 10.0 lbs



EXCEL™ E600 MAGNETIC LOCK



APPLICATION

Traffic Control, Air-Locks & Communicating Bathrooms

600 lb / 272 kg holding force magnetic lock for interior door traffic control where physical attack is not a concern. Door and lock status outputs included for remote monitoring, mantraps and system application needs.



STANDARD FEATURES

- Door status, lock status and Bi-color LED
- Interlocking quick mount assembly
- Adjustable mounting bracket with choice of self drilling and tapping mounting screws or machine screws
- Wire access chamber with terminal block
- Dual voltage 12/24VDC
- 628 Clear anodized aluminum



SPECIFICATIONS

Mechanical

Holding Force: 600 lbs / 272 kg

Lock 9-7/8" L x 2-7/8" H x 1" D; (250 L x 51 H x 26 D mm)

Armature 7-5/16" L x 1-1/2" H x 1/2" D; (186 L x 38 H x 13 D mm)

Electrical

Circuitry & Wiring PC board with voltage and current spike protection, instant release anti-residual magnetism circuit, terminal block for power input and status outputs

Circuitry Voltage and current spike protection and instant release anti-residual magnetism circuitry

Voltage 12/24VDC, field selectable

Current 500 mA @ 12VDC; 250 mA @ 24VDC

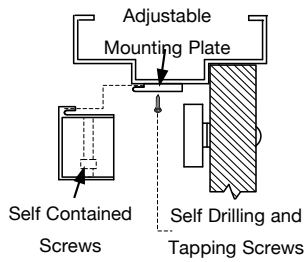
Lock Status Contact SPDT, 2 Amp @ 30VDC

Door Status Contact SPDT, 250 mA @ 30VDC

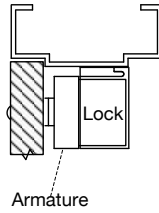
Weight 7.0 lbs



QUICK MOUNT INTERLOCKING ASSEMBLY



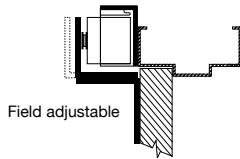
OUTSWING



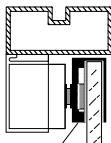
TOP JAMB MOUNTING KIT FOR INSWING DOORS



- MODELS**
- E12Z** Top jamb kit for E1200
 - E6Z** Top jamb kit for E600



GLASS DOOR ARMATURE MOUNTING KIT



- MODELS**
- E12U** Glass door kit for E1200
 - E6U** Glass door kit for E600

E SERIES ANGLE BRACKETS

Used for the extension of a narrow frame header mounting surface, the bracket provides additional surface area for proper lock mounting

- MODELS**
- E12A** E1200 adjustable angle bracket.
10-1/2" L x 1-3/4" W x 3-1/8" D
 - E6A** E600 adjustable angle bracket.
9-7/8" L x 1-1/4" W x 2-1/4" D
 - E12L** E1200 angle bracket.
May be field cut for use with E600
10-1/2" L x 1-1/2" H x 3/4" D



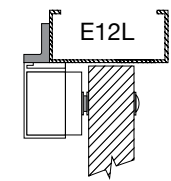
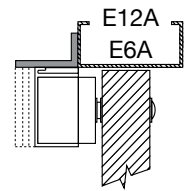
E12A



E6A



E12L



E SERIES STOP FILLER PLATES

Used where the frame stop does not provide enough mounting surface, the filler bar provides enough additional surface area for proper lock mounting.

- MODELS**
- E12F01** E1200 stop filler plates.
E600: Field cut for E600
Inches: 5/8" H x 3/4" D x 10-1/2" L
 - E12F02** E1200 stop filler plates.
E600: Field cut for E600
Inches: 3/4" H x 3/4" D x 10-1/2" L



E12F01
E12F02

