

YNOTLOC™

YG10

ELECTRONIC GATE LOCK

Designed to secure vehicle and pedestrian gates, the YG10 boast a large range of features not seen before in this application. Extremely high physical strength is critical but the ease of control and connectivity to access control systems really make the lock stand out against its competition. Fully monitored and water proof help make the YG10 the perfect outdoor locking solution.

Extreme Security

- Automatic deadbolting.
- 18mm diameter stainless steel bolt pin.
- 20,000N rated force; able to operate after 2,000kg has been applied then removed.
- 30,000N holding force (3,000Kg).
- Keyed access to manual override.

Weather Proof

- Suitable for outdoor use with an IP65 rating.
- Powdered coated aluminium body and cover.

Integrated Access Control

- Anti-tamper and Auto-relock.
- Timed re-lock after 1 minute.
- Multiple attempts to lock and unlock .

Electronic Compatibility

- Door position switch.
- Bolt locked and unlocked monitor.
- Input voltage from 12VDC – 24VDC.
- Can integrate with access control and alarm system.

Low Current Consumption

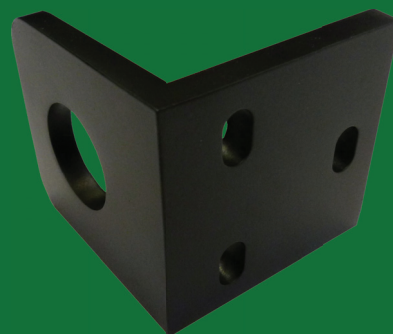
- Less than 15mA in standby.
- Less than 300mA in operation.

Dimensions

- 152mmL x 89mmW x 77mmD

Approvals

- Cycle tested to 1000000 operations.



PRODUCT New