

ELECTRONIC DEADBOLTING LOCK

The YD25K incorporates the same advanced design, quality and electronic ingenuity as the YD25 with the added flexibility of a manual key override. Despite the addition of the key override mechanism the streamlined design is maintained allowing the YD25K to provide a high security, yet versatile, door locking device.

Streamline Dimensions

- 280mmL x 25mmW x 42mmD

High Security

- 10,000N holding force (1,000kg).
- Automatic deadbolting.
- 12.7mm diameter stainless steel bolt pin.

Versatile Installation

- Mortice mount horizontally or vertically, on single or double acting doors. Surface mount with the aid of YD25K accessories, including onto glass doors.

Manual Override

- A Euro style key cylinder can be used to manually control the lock.

Triple Monitoring

- Door, bolt and key position monitors.

Integrated Access Control

The YD25K electronics offer:

- Multiple attempts to lock and unlock.
- Auto relock after 0/3/6/9 seconds.
- Anti-tailgate and Anti-tamper.

Varied Voltage Input

- Input voltage from 12VDC – 24 VDC.
- Thermal overheating protection.
- Built in reverse polarity and transient protection.

Low Current Consumption

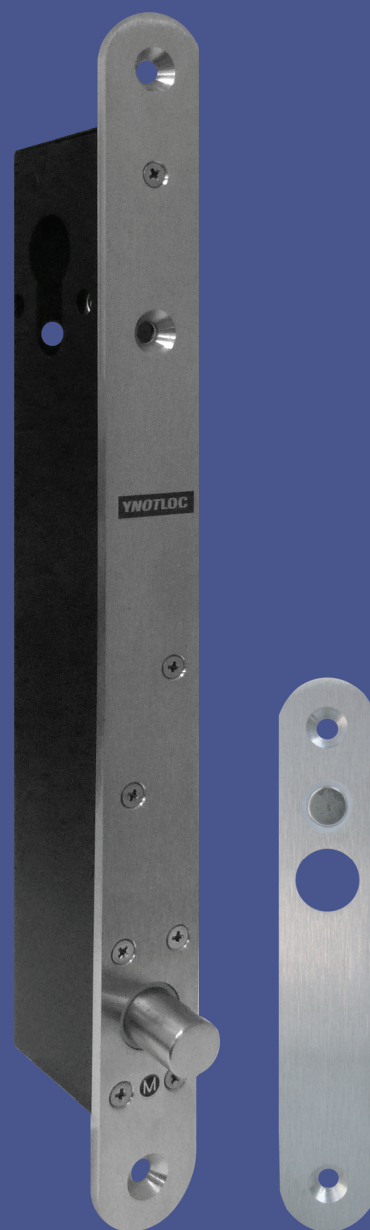
- Current reduction circuitry limits the power required to maintain the locks state.

Approvals

- CE-BS EN50081-1, BS EN50082-1, BS EN50082-2.
- Cycle tested to 1000000 operations.

Appearance

- Faceplates and Strike plates come with rounded or square ends and are all made from 3mm polished Stainless Steel.



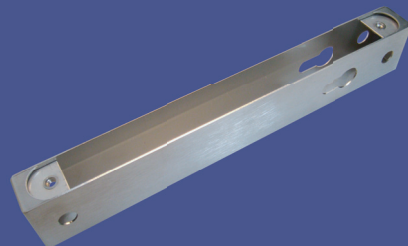
SURFACE MOUNT ACCESSORIES

There are various accessories available for the YD25K model deadbolt to help assist with installation and operation. They consist of:

Lock Housing

When mortice fitting is not an option, a YD25K lock used in conjunction with a Lock housing can be the perfect solution. Housings can be screwed to wood or glued to glass and offer the surface mounting answer.

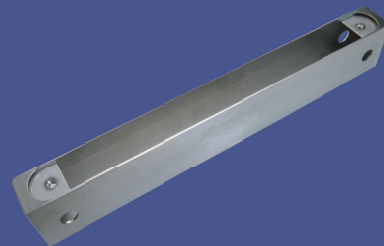
NB: Housings can only be used with round end faceplates
Dimensions: 295mmL x 28.5mmW x 47mmH



Long Strike Housing

Similar to the Lock housing but designed to accommodate the long strike plate.

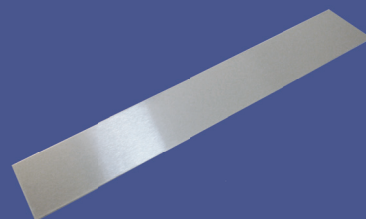
NB: Housings can only be used with round end long strike plates
Dimensions: 295mmL x 28.5mmW x 47mmH



Dress plate

A flat stainless steel dress plate is used when gluing a housing onto glass, to give a clean finish.

Dimensions: 295mmL x 50mmH x 1mmT



Long strike plate

Made from 3mm polished stainless steel. Dimensions match the YD25K faceplate and provide a nice finishing option. Available in rounded or square ends.

Dimensions: 280mmL x 25mmW x 3mmT



Short strike plate

Made from 3mm polished stainless steel and comes standard with the YD25 deadbolt. Available in rounded or square ends.

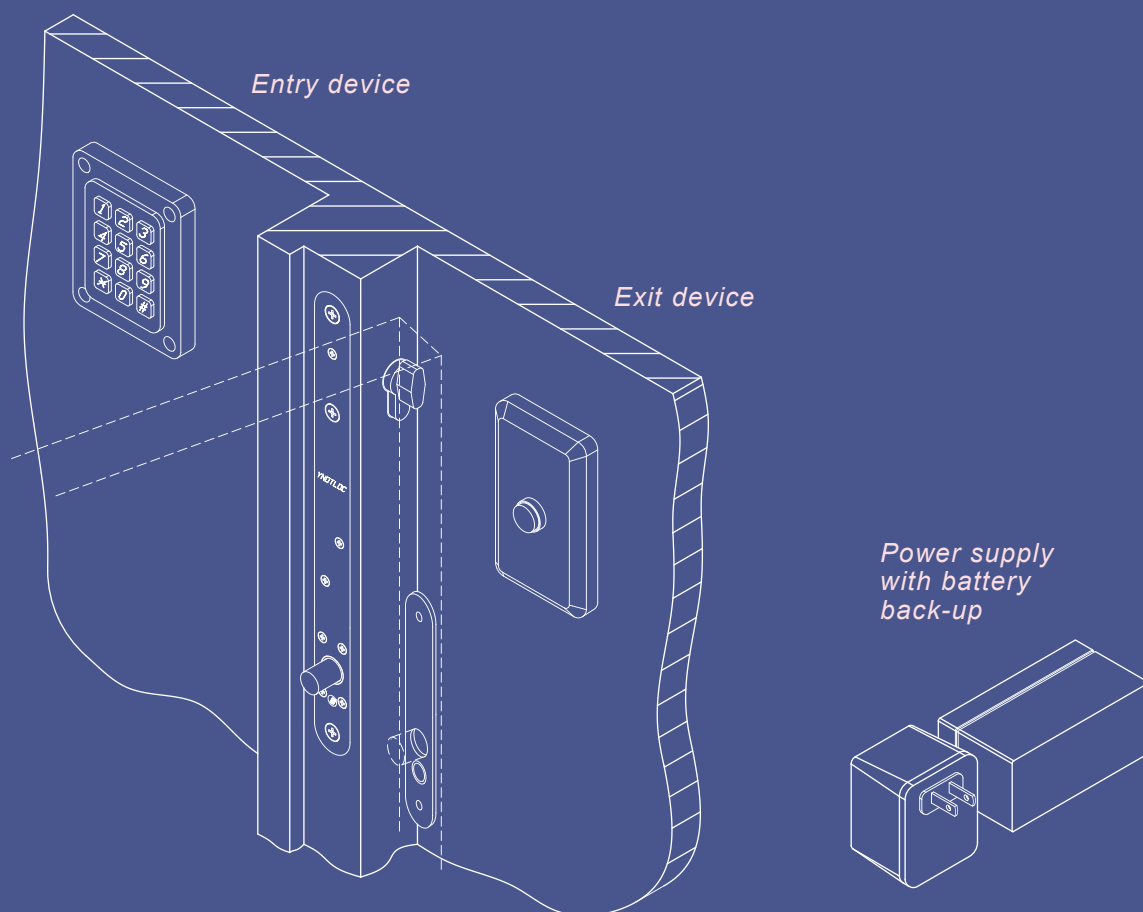
Dimensions: 140mmL x 25mmW x 3mmT



INTEGRATED ACCESS CONTROL

The YD25K can be connected to advanced access control systems and offers feed back for both door and bolt positions. This allows it to be used in sophisticated installations where logging and traffic records are important.

However the integrated access control features of the YD25K also mean it is the perfect solution when electronic locking is desired without the need for a complex control system. As shown in the diagram a power supply can be used to power the lock, with an entry device, in this case a key pad, and an exit device, simple push button, used to control it. When the door is closed the lock senses that the strike plate is in position and the YD25K automatically locks. With multiple attempts to lock / unlock, automatic locking and 8 second exit delays, all of the basic functions of an access control system are taken care of by the YD25K.



<i>PTL</i>	<i>Power To Lock</i>	<i>Fail Safe</i>	<i>Fail Unlocked</i>
<i>PTO</i>	<i>Power To Open</i>	<i>Fail Secure</i>	<i>Fail Locked</i>

PRODUCT COMPARISON CHART

	YD25 Streamline	YD25K Key Override	YD38 High Security
Dimensions (mm)			
Bolt pin diameter	12.7	12.7	14.3
Bolt pin length / throw	16	16	14
Faceplate (Width, Length, Thickness)	25, 210, 3	25, 280, 3	37.5, 203, 3
Cover (Width, Length, Thickness)	22, 164, 39	22, 230, 42	33, 167, 41
Materials (SS = Stainless Steel)			
Screws	SS	SS	SS
Bolt pin	SS	SS	SS
Faceplate	SS	SS	SS
Strike plate	SS	SS	SS
Plastic components	Acetal	Acetal	Acetal
Power requirements			
Activate current 12V	1050mA	1050mA	1500mA
Activate current 24V	950mA	950mA	1400mA
Holding current 12V	200mA	200mA	230mA
Holding current 24V	70mA	70mA	90mA
Thermal overheating protection	Yes	Yes	Yes
Input Voltage	12-24VDC±10%	12-24VDC±10%	12-24VDC±10%
Monitoring			
Door Position Switch	Yes	Yes	Yes
Bolt Position Switch	Yes	Yes	Yes
Key Override Switch		Yes	
Integrated access control			
PTL locking attempts	9	9	9
PTO unlocking attempts	5	5	5
Auto relock after 9 seconds	Yes	Yes	Yes
Anti tailgate	Yes	Yes	Yes
Modes			
PTL (Fail safe)	Yes	Yes	Yes
PTO (Fail secure)	Yes	Yes	Yes
Particulars			
Strength	10,000N	10,000N	20,000N
Cycle tested operations	1000000	1000000	1000000
Guarantee	5 Years	5 Years	5 Years
CE approval	Yes	Yes	Yes
Deadbolting	Yes	Yes	Yes