

Magnetic Locks and Bolts

Direct-Pull Magnet - Armlock 281

The Adams Rite Door magnet range are surface mounted direct pull magnets that are used as part of an access control system for electric locking applications.



Key Benefits

- Suitable for use on aluminium, timber and steel doors
- Compact case size and clean aesthetics
- Magnetic holding force of at least 510kg (1120 lbs)
- Has a security pin feature to help prevent unauthorised removal of the magnet from the door frame fixing plate
- Offers durability and low maintenance
- Available as a double magnet model
- User selectable dual voltage - 12 or 24vDC
- CE marked to EMC Directive
- Monitoring available (Hall Effect)
- Built in voltage spike suppressor
- Guarantee 3 years

Related Hardware

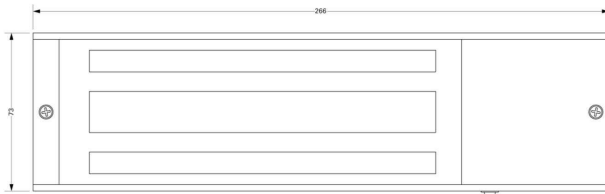
'L' and 'Z' Brackets ~ 4591M & 999M Monitored Paddle Handle & Exit Device
Switching Accessories ~ RiteKey Keypad ~ Push-to-Exit Button ~ Power Supply Unit

Magnetic Locks and Bolts

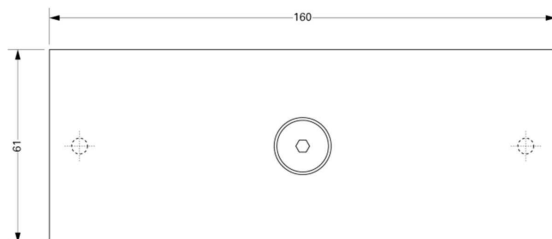
Direct-Pull Magnet - Armlock 281

Specification

Armlock 281-005



Armature for Armlock 280 Series magnets



| | |
|------------------------|--|
| Single Magnet: | 40mm x 266mm x 73mm. |
| Double Magnet: | 40mm x 532mm x 73mm. |
| Armature: | 16mm x 160mm x 61mm. (2 no. for double magnet) |
| Nominal Holding Force: | 510kg (1120lbs). |
| Supply Voltage: | 12 or 24vDC ($\pm 15\%$). |
| Nominal Current: | 480mA @ 12vDC, 240mA @ 24vDC. Dual coil. Built-in voltage spike suppressor. |
| Monitoring: | Relay dry contact with LED. |
| Door Gap: | Maximum 3mm (1/8"). |
| Positioning: | Outward opening - surface mounted to door frame header. Inward opening - door frame header using 'L' & 'Z' brackets |
| Magnet Housing: | Brushed satin aluminium. |
| Note: | To achieve immediate release, it is important that the release switch breaks the circuit on the positive supply to the magnet. |

Ordering Information

| | |
|---------|---|
| 281-000 | 281 STANDARD MAGNET SINGLE NON MONIOTORED |
| 281-005 | 281 STANDARD MAGNET SINGLE MONITORED |
| 281-200 | 281 STANDARD MAGNET DOUBLE NON MONITORED |
| 281-205 | 281 STANDARD MAGNET DOUBLE MONITORED |